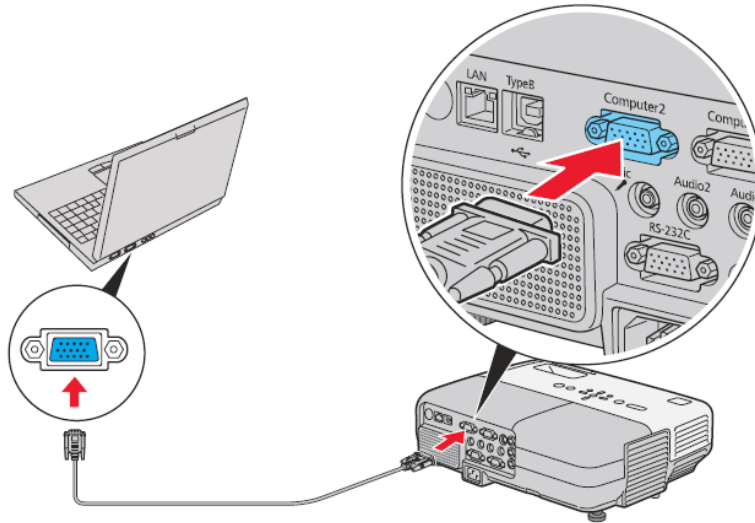


# Connect the Projector

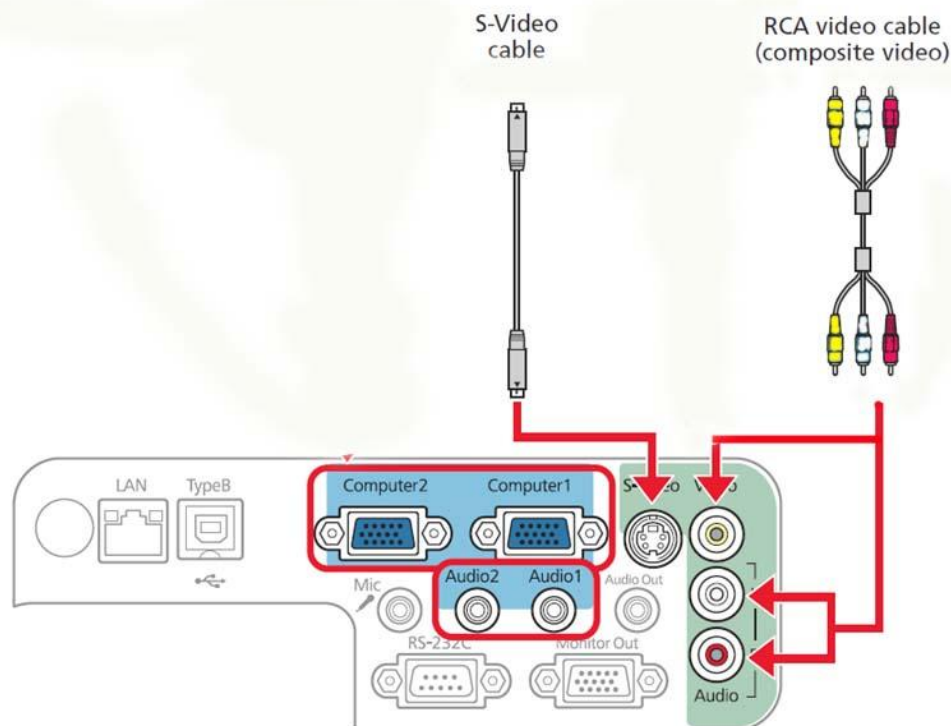
## Computer

Connect a computer using the VGA cable that came with the projector. Connect one end to the projector's Computer 1 or Computer 2 port, and the other end to your computer's monitor port. If you are using a notebook, switch it to external display. (Try Fn + F4) You can also connect an audio cable or microphone.



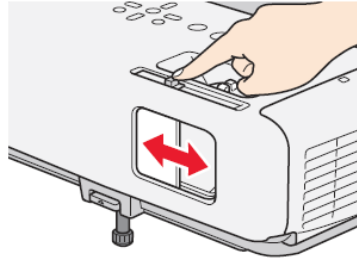
## Video Player

Connect either by the S-video cable or RCA cables.

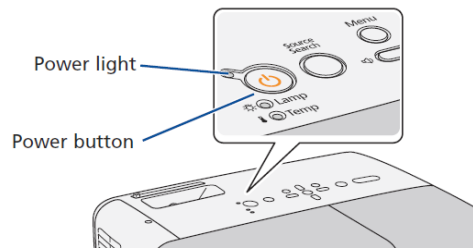


# Turn On Your Equipment

- Turn on your computer or video source.
- Make sure the projector.
- Open the A/V Mute slide all the way.



- Press the power button on the projector or remote control.

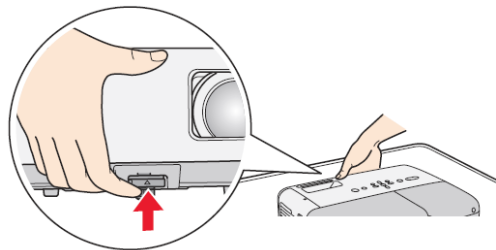


- The power light flashes green, then stays on.

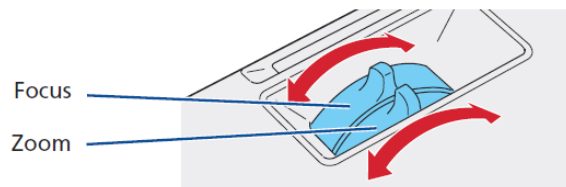
# Adjust the Image

If you don't see an image, press the **Source Search** button on the projector or the **Search** button on the remote control to select the image source.

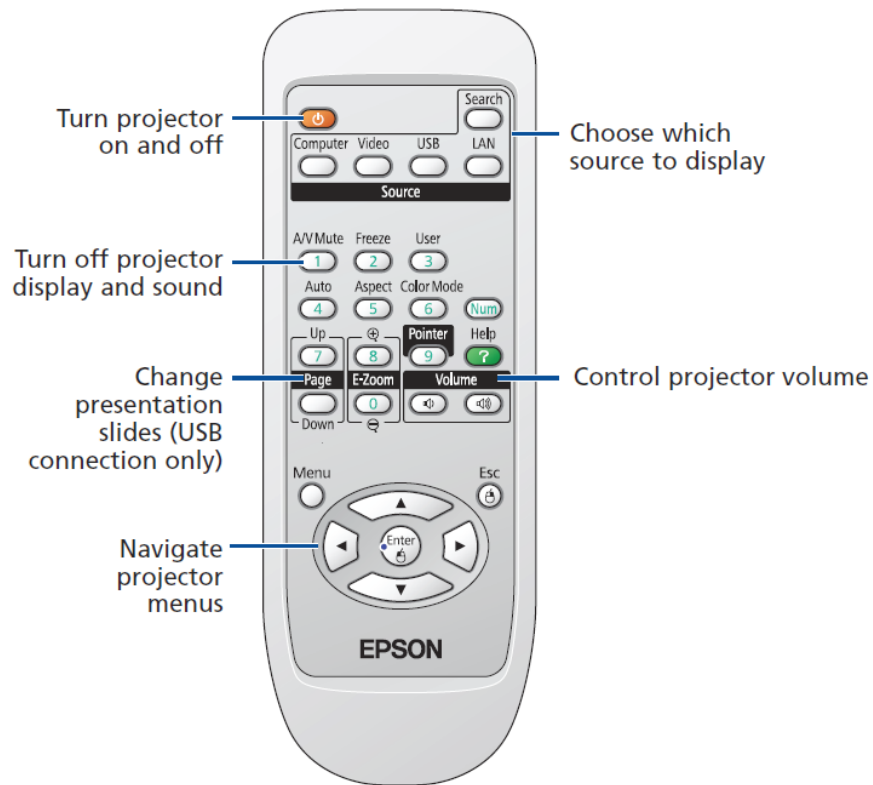
To raise the image, press the blue foot release button and lift the front of the projector. Release the button to lock the foot in position.



Turn the focus ring to sharpen the image. Turn the zoom ring to reduce or enlarge the image.

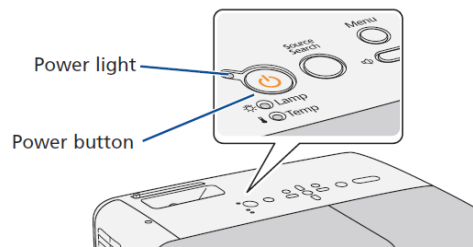


# Using the Remote Control



# Turn Off Your Equipment

- Press the power button ***twice*** on the projector or remote control.



- The power light flashes red, you may unplug the cart.